

**01.09.2010 .**

01.09.2010 .,  
(843) 524-72-34.

2010 .  
39 910 .

2010 .  
( 0,47%).

( 4,83%)

« »  
« »  
( 0,81%).

1 .

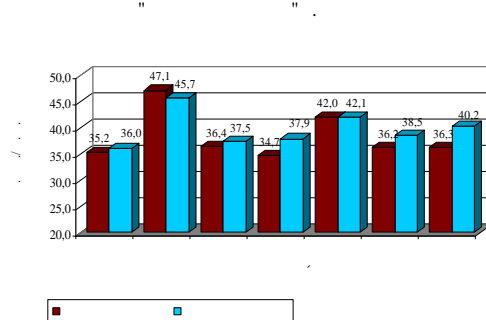
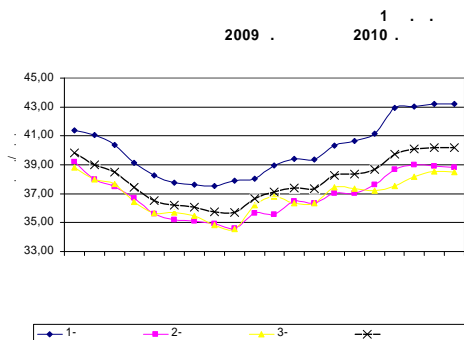
« »  
( 3,44%),  
( 1,96%),

1 .

**01.09.2010 .,**

	1-	36,18-43,61	40,3	8,0	32,89-34,12	33,1	3,0	33,68-43,81	38,5
	2-	29,17-36,9	32,6	15,0	25,75-35,88	32,0	10,0	32,96-39,81	35,5
	3-	26,57-31,28	30,4	5,0	30-35,11	32,7	5,0	30,8-34,46	32,8
	1-	39,06-48,36	43,2	4,0	37,5-56,45	45,6	7,0	40,91-51,47	47,2
	2-	34,26-46,43	39,6	7,0	28,94-57,38	42,4	25,0	34,35-52	40,1
	3-	31,35-44,2	35,9	10,0	27,78-70,37	42,4	33,0	31,4-61,22	41,8
	1-	24,92-60	40,9	10,0	33,75-33,75	33,8	1,0	30,46-45,34	38,8
	2-	31,03-47,96	36,7	10,0	31,87-31,87	31,9	1,0	29,18-36,76	33,1
	3-	28,43-35,19	30,9	7,0	25,69-31,65	29,2	7,0	26,52-35,02	30,4
	1-	35,57-52,33	41,1	24,0	31,25-43,73	37,4	9,0	37,88-44,29	41,5
	2-	30,68-42,82	35,5	18,0	29,68-53,57	37,8	17,0	28,72-43,75	37,2
	3-	23,88-36,71	31,5	17,0	32,18-48,16	39,5	26,0	26,69-47,86	35,9
	1-	36,76-50,98	42,4	25,0	37,18-40	38,2	3,0	38,95-51,21	43,8
	2-	32,29-43,62	35,4	30,0	36,40-36,40	36,4	1,0	34,44-47,4	39,4
	3-	31,58-37,29	33,4	11,0	30,86-40,85	35,9	2,0	31,34-43,09	35,7
	1-	38,79-45	41,1	8,0	44,44-44,44	44,4	1,0	35,9-49,73	42,6
	2-	30,2-38,16	33,9	5,0	24,04-43,27	39,1	6,0	30,85-48,11	38,1
	3-	28,59-35,2	31,7	4,0	29,33-37,44	33,4	4,0	31,75-40,91	35,7
	1-	29,49-45	41,1	11,0	31,82-45	40,3	4,0	37,66-56,41	42,9
	2-	28,41-39,35	34,7	7,0	33,49-45,54	36,0	7,0	28,1-42,86	36,8
	3-	27,15-34,31	30,3	6,0	29,17-47,06	38,5	14,0	30,51-44,62	35,9

: ( 3,84%), ( 3,66%), ( 2,25%), ( 0,07%).  
 ( 2,68%) ( 3,99%). : - ( 2,06%),



	1-	2-	3-
	0,98	-0,80	1,24
	-4,11	10,08	5,45
	-4,04	-3,54	2,52
	6,42	3,22	5,95
	0,05	-0,21	-0,10

2010 .  
37 910 .

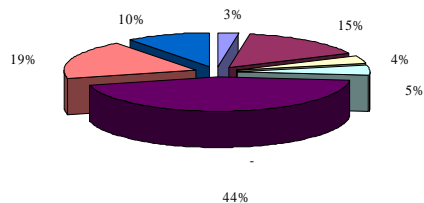
1 .

01.09.2010 .

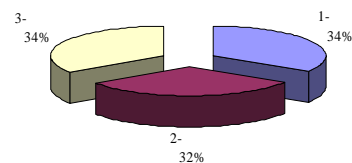
	1-	36,36-39,47	37,80	3
	2-	34,06-36,29	35,30	3
	3-	30,18-32,50	31,33	2
	1-	37,50-55,00	45,85	12
	2-	35,30-60,50	44,95	13
	3-	25,00-130,00	49,14	22
	1-	23,00-48,43	38,59	5
	2-	27,00-39,50	33,25	2
	3-	29,50-40,96	35,30	4
	1-	32,65-46,00	36,49	5
	2-	31,17-37,61	34,36	5
	3-	29,26-36,46	33,18	5
	1-	30,00-79,84	42,91	40
	2-	29,50-69,52	41,53	45
	3-	30,00-53,97	41,59	50
	1-	31,70-49,28	39,19	26
	2-	16,36-75,11	37,29	17
	3-	25,45-34,43	29,48	14
	1-	26,14-50,55	35,89	12
	2-	34,50-49,70	37,83	11
	3-	28,00-41,02	34,90	8

: ( 5,1%), - ( 2,0%), ( 1,7%),  
 : ( 3,9%), ( 5,0%), ( 1,4%), ( 3,6%),

2010 .



2010 .



10,6%

01.09.2010

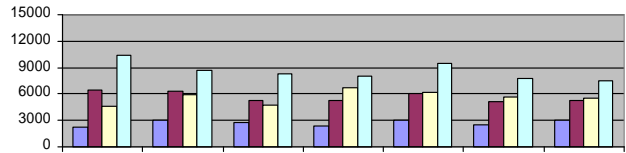
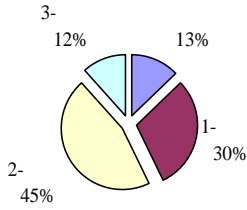
2750

(

- 5900 8500

5500

01.09.2010 ..



■ ■ 1- ■ 2- ■ 3-

- 45%, : - 12% / 30% - 13%.  
 33%.

450 [www.kazned.ru](http://www.kazned.ru), 300

(843) 524-72-34

[http://.../.](http://...)